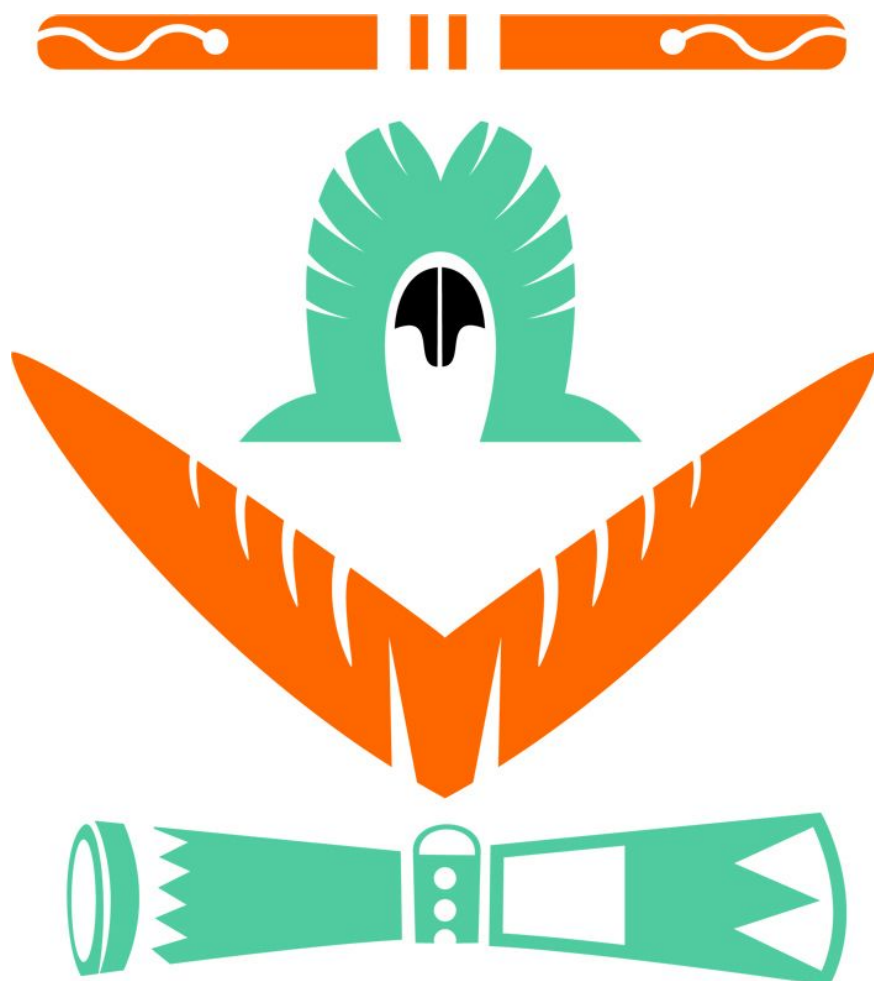


Juwarki Kapu-Lug Limited

Juwarki = Spirit Bird (Ghungalu Dialect)
Kapu-Lug = Safe Home (Torres Strait Dialect)



Contact Details:

224 Quay Street
PO Box 1249
Rockhampton City Qld 4700
Tel: 0749 277 508
Mob: 0418 985 849
Email: echubb@juwarki.org.au
Web: www.juwarki.org.au

Table of Contents

[CHRONOLOGY](#)

[ORGANISATIONAL PHILOSOPHY](#)

[ORGANISATIONAL DIAGRAM](#)

[CONSTITUTIONAL OBJECTS:](#)

[GOVERNANCE](#)

[STAKEHOLDERS](#)

[CORPORATE OVERVIEW](#)

[SUMMARY OF CURRENT PROGRAMS](#)

[DIVERSIONARY CENTRE - PROGRAM SUMMARY](#)

[CELL VISITORS SERVICE - PROGRAM SUMMARY](#)

[INDIGENOUS COMMUNITY JUSTICE GROUP - YOOMBOODA gNUGEENA ABORIGINAL AND](#)

[ISLANDER JUSTICE PANEL - PROGRAM SUMMARY](#)

[ELDERS TRANSPORT SERVICE - PROGRAM SUMMARY](#)

[SISTERS IN MINING - PROGRAM SUMMARY](#)

[JUWARKI KAPU-LUG - PRIVACY STATEMENT](#)

CHRONOLOGY

1991 – 1993 Formation of Juwarki Kapu-Lug Aboriginal and Torres Strait Islanders Corporation.

A number of concerned Indigenous community members met on several occasions between 1991 and 1993 to develop a service model and rules for the proposed corporation to take advantage of funding which became available for a Diversion from Custody Program in Rockhampton.

1993 Incorporation of Juwarki Kapu-Lug Aboriginal and Torres Strait Islanders Corporation.

Incorporation documents were lodged by the Committee with the Registrar of Aboriginal Corporations and the organisation was officially incorporated on the 14th of July 1993. The corporation was set up as a not for profit organisation, holds tax deductible gift recipient (TDGR) and public benevolent institution (PBI) status and is currently registered for GST.

1994 Establishment of the Cell Watch Program and Prison Aid Program.

In 1994 funding became available from the Queensland Department of Families Youth and Community Care, Office of Aboriginal and Torres Strait Islander Affairs (OATSIA) to deliver a Cell Visitors service to the Rockhampton Watch-house. Juwarki Kapu-Lug now had the capacity to deliver this service which started with two Cell Visitors. By this stage the corporation was also operating the Prison Aid Program which was then funded by ATSIC and later by the Attorney General's Department.

1994 – 1995 Development of a Diversion from Custody Centre.

The search for land to build a Diversionary Centre started in 1994 with negotiations between the Juwarki Kapu-Lug Aboriginal and Torres Strait Islanders Corporation's board, the Community and the Rockhampton City Council. The Board of Management traveled to other established diversion from custody programs in Mt Isa and Brisbane to identify appropriate planning, equipment and staffing needs to build a holistic and culturally appropriate service. Taking into consideration client needs and community concerns, the search for land went on for two years, finally concluding when the Catholic Diocese of Rockhampton agreed to sell a parcel of land available in the CBD to the Department of Aboriginal and Torres Strait Islander Policy for the purposes of establishing a Diversion from Custody Centre.

1996 Construction of the Centre started in February 1996 and was completed in August 1996. Ten Careworker positions at the Diversionary Centre were advertised in Rockhampton with a six month training component - Certificate II Community Work – Drugs and Alcohol.

1996 The Diversionary Centre started operating and admitted its first client on 2nd December 1996, with a staffing component of eight full-time Care Workers, Cell Watch Officer, Manager and Admin/Finance Officer.

1997 The Honorable Kevin Lingard MLA officially opened the Centre on the 14th July 1997.

2006 Department Aboriginal and Torres Strait Islander Policy divestment of Diversion From Custody Programs to the Department of Communities – Homelessness.

2007 Strengthening Indigenous Non-Government Organisations (SINGO's) project implemented by the department of Communities. Service Standards (HSQF) Self Assessment. Corporate restructure.

2008 The roll out of QIADP a 3 year pilot – Qld Indigenous Alcohol Diversion Program, funded by the Dept of Communities, support services delivered by Juwarki QIADP.

2009 Transition of corporate registration from Office of the Registrar of Aboriginal Corporations (ORAC) to the Australian Securities and Investment Commission (ASIC). Corporate restructure.

2010 Establishment of a for profit subsidiary of Juwarki Kapu-Lug Ltd, the registration of Bungoo Pty Ltd.

2011 Relocate corporate offices to 224 Quay Street, Rockhampton.

2012 Closure of the QIADP Pilot.

2013 Closure of the Prison Aid Program.

2015 Juwarki takes Auspice of the Qld Attorney Generals Dept — Yoomboona gNujeena Indigenous Community Justice Group from 1/7/15.

2015 Juwarki/Bungoo Pty Ltd Auspices the Sisters in Mining Project in partnership with Thiess, Dept Aboriginal & Torres Strait Islander Partnerships, Dept Prime Minister & Cabinet, and the State Dept of Education and Training.

ORGANISATIONAL PHILOSOPHY

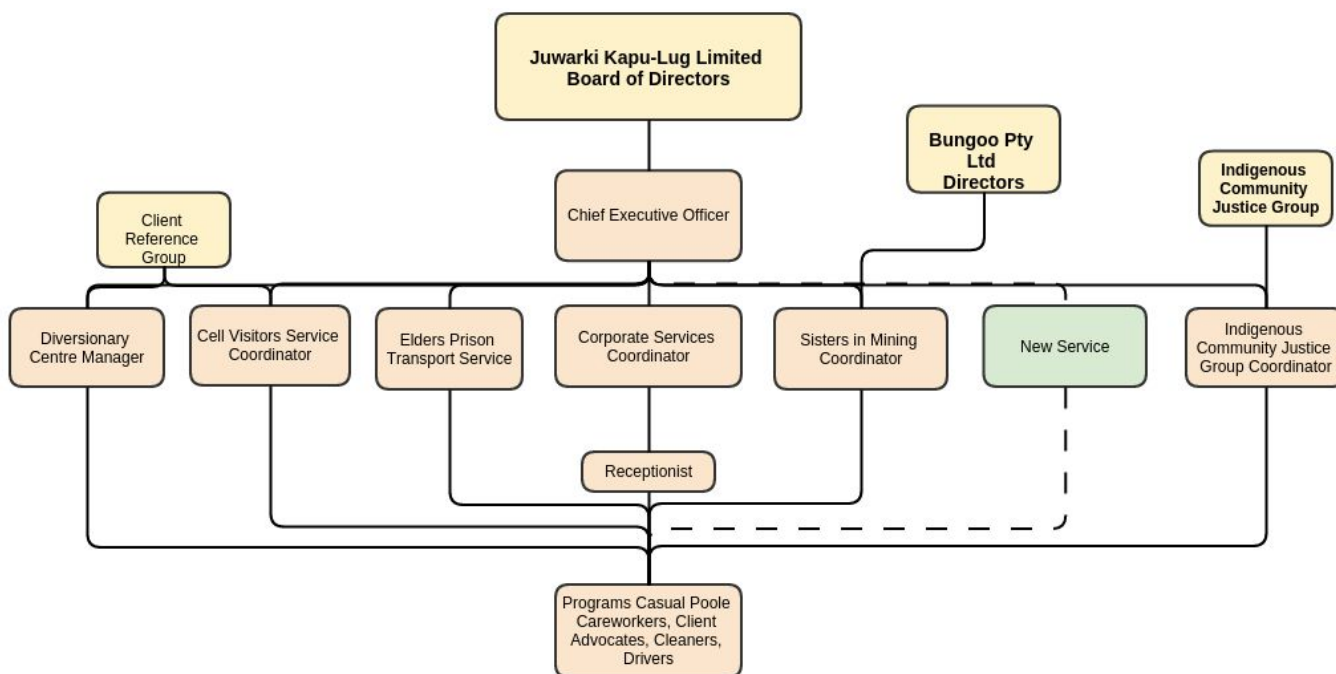
VISION - To be a leader in the provision of drug and alcohol diversion, homelessness and correctional support services in the Rockhampton region. To improve the lives of vulnerable Aboriginals and Islanders by preventing all incidents of harm or death in the justice system and by reducing the level of homelessness in our community.

PURPOSE - Assisting Aboriginal and Islander individuals at risk to themselves and others is Juwarki Kapu-Lug's primary purpose. All programs will be delivered in a safe, caring and nonjudgmental environment whilst maintaining the dignity of our clients. We will provide the highest level of support and encouragement to our clients during their time of need.

VALUES - Juwarki Kapu-Lug values humanity, mutual respect, empathy, diversity and understanding. We recognise the importance of culture and connection to family in our work. We will demonstrate passion and commitment toward empowering others to make positive changes in their lives.

The most valuable assets our company maintains are it's Humans!

ORGANISATIONAL DIAGRAM



CONSTITUTIONAL OBJECTS:

The objects of the company are to:

- facilitate the implementation of the recommendation of the Royal Commission into Black Deaths in Custody as a positive step towards reducing the number of black deaths in custody;
- offer assistance to Aboriginal and Islanders who are held in police custody by way of a cell watch program
- deliver from custody Aboriginals and Islanders who would otherwise be held in police custody on public drunkenness charges;
- provide a non-custodial facility for the care and treatment of intoxicated persons who are diverted from police custody;
- develop cross-cultural and cultural awareness programs for non-Aboriginal people in the wider community; and
- undertake networking, consultation and liaison with Aboriginal organisations, government departments and non-government organisations in Central Queensland.

GOVERNANCE

Board of Directors	Position	Appointed
Mr Roy Bob	Chairperson	21/10/2010
Mrs Mona Kielly	Director	14/10/2009
Mr Clem Beezley	Director	20/09/2013
Mr Leslie Purcell	Director	26/09/2014
Ms Patricia Leisha	Founder/Elder	10/08/1994
Mr Edward Chubb	Secretary/CEO/Director	14/10/2009

STAKEHOLDERS

We value the involvement, cooperation and generous expertise given by the following individuals and organisations that assist us in achieving our mission.

- Aboriginal and Islander Community of Central Queensland
- Members of Juwarki Kapu-Lug Limited
- Department of Communities, Child Safety and Disability Services
- Department of Aboriginal & Torres Strait Islander Partnership
- Department of Prime Minister and Cabinet
- Department of Education and Training
- Department of Justice and Attorney General
- Queensland Police Service – Rockhampton Watch-house.
- The Capricornia Correctional Centre.
- Rockhampton Indigenous Community Justice Group
- The Indigenous Community Controlled Health and Human Services Network
- Queensland Health – Rockhampton Base Hospital Accident & Emergency
- Queensland Health – Alcohol, Tobacco and Other Drugs Service (A.T.O.D.S.)
- Queensland Ambulance Service
- Gumbi Gumbi Aboriginal and Torres Strait Islanders Corporation
- Frenchville Rockwheelers Wheelchair Basketball Team
- Bidgerdii Aboriginal and Torres Strait Islanders Corporation for Community Health Services Central Queensland Region
- Darumbal Community Youth Services
- Heelum Yumba – CQ Healing Centre
- SAIMA Torres Strait Islanders Corporation

CORPORATE OVERVIEW

Juwarki Kapu-Lug was created in 1993 in response to the recommendations of the Royal Commission into Aboriginal Deaths in Custody. Its role is to deliver social justice, drug and alcohol support services to the indigenous community of Rockhampton. The provision of support services to the Correctional Centre and Police Watch-houses.

Since its creation, the organisation has grown from managing one program with an annual turnover of \$78,000 to managing four major programs with a turnover of in excess of \$1.5 million per annum.

Juwarki Kapu-Lug Ltd is a company limited by guarantee registered under the Corporations Act 2001. It is a not for profit entity that holds fringe benefits tax (FBT) exemption, public benevolent institution (PBI) and tax deductible gift recipient (TDGR) status. Juwarki Kapu-Lug manages its current service provision through a number of Service Agreements with various state and federal government departments. The Board of Directors is comprised of representatives from the local Aboriginal and Islander community and is appointed to oversee the responsibilities of the company.

SUMMARY OF CURRENT PROGRAMS

Services currently provided by Juwarki Kapu-Lug are managed under the following programs:

- Diversionary Centre - A 15 bed facility which provides sobering up services for adult individuals who are at risk to themselves or others as a consequence of their inebriated state.
- Cell Visitors Service - A cell visitors service to the Rockhampton Watchhouse.
- Indigenous Community Justice Group - Yoombooda gNugeena Aboriginal and Islander Justice Panel.
- Elders Transport Service - A transport service for Elders from the Rockhampton and Woorabinda Community to the Capricornia Correctional Centre.
- Sisters In Mining - A Coordination and Mentoring program.

DIVERSIONARY CENTRE - PROGRAM SUMMARY

Juwarki Kapu-Lug Limited delivers a number of services including a Diversion from Custody Service from the Juwarki Kapu-Lug Diversionary Centre. The Centre was built in 1995-6 and opened in 1997. It has been purpose built to cater for intoxicated adults and is staffed by experienced Careworkers 24 hours per day, 365 day per year.

The Centre provides medical attention, support, meals and accommodation for between 3500 – 4000 intoxicated clients every year.

Services include but are not restricted to the following:

A fifteen bed diversionary facility which provides sobering up services for adult individuals who are at risk to themselves or others as a consequence of their inebriated state.

The Diversionary facility offers alternative accommodation to the police Watchhouse for adult individuals who have been detained for public drunkenness and who are prepared to admit themselves to the facility voluntarily. We provide a safe, caring environment with particular attention to the supervision of intoxicated persons (e.g. personal hygiene – showers and clean clothes, nutritional requirements – appropriate food and drink, health assessments on a routine basis, and first aid where necessary). Clients may also receive information and referral services aimed at encouraging individuals assessed as requiring further alcohol treatment and rehabilitation services to avail themselves of these services or such other health or community service as they may require. We provide fifteen beds to cater for both male and female clients in separate dormitory style accommodation.

The Centre is staffed 24 hours a day, 7 days a week, every day of the year. The Centre's human resources include the Centre Manager, administrative support is provided by Juwarki Corporate and the equivalent of two Care Workers (gender appropriate) who work around the clock to care for clients.

CELL VISITORS SERVICE - PROGRAM SUMMARY

The Cell Watch or Cell Visitors Service was implemented by the Queensland Government as a response to recommendations from the Royal Commission into Aboriginal Deaths in Custody. The Rockhampton Cell Visitors Service

was established in 1993 by Juwarki Kapu-Lug and is funded by the Department of Communities, Child Safety and Disability Services.

There are a number of Cell Visitors Services around Queensland in locations such as Brisbane, Townsville, Cairns, Mt Isa, Mackay and Palm Island. The aim of these services is to minimise harm and to prevent deaths in custody. The Rockhampton Cell Visitors Service works in conjunction with the Diversionary Centre to provide a 24 hour seven day per week service to the Rockhampton Watchhouse and surrounding community.

Our service works together with the Queensland Police Service to reduce the risk of harm to our community.

Services include but are not restricted to the following:

- Helping to observe the health and well-being of people in custody and help to work out their needs and problems;
- Assisting with the communication and understanding between prisoners, Watchhouse Staff, other agencies and persons;
- Offering company, support and assistance to people in custody;
- Helping to prevent suicide and self-injury of persons in custody;
- Helping to identify physical, emotional or mental symptoms which require medical attention or support;
- Providing information and direction to support services to persons in custody; and
- Providing support and feedback to Watchhouse Staff concerning issues of a cultural, social or environmental nature relating to Aboriginal and Torres Strait Islander persons in custody.

The Service's human resources include a Coordinator and Cell Visitors, administrative support is provided by Juwarki Corporate.

INDIGENOUS COMMUNITY JUSTICE GROUP - YOOMBOODA gNUGEENA ABORIGINAL AND ISLANDER JUSTICE PANEL - PROGRAM SUMMARY

The Community Justice Group Program (the CJG Program) provides essential support and services to Aboriginal and Torres Strait Islander victims and offenders within the criminal justice system. The Department of Justice and Attorney-General (DJAG) provides funding to Aboriginal and Torres Strait Islander organisations to develop strategies within their communities for dealing with justice-related issues, and to decrease Aboriginal and Torres Strait Islander peoples' contact with the criminal justice system. The CJG Program provides community members with the opportunity to work collaboratively with the courts, police, and staff from other government agencies to address criminal behaviour, and provide support and assistance to victims of crime. CJGs are estimated to support over 5,000 Indigenous offenders and 3,000 victims of crime in communities throughout Queensland each year. CJGs develop strong working relationships with many non-government agencies to which they refer both victims and offenders to gain the support and assistance needed. These agencies include Aboriginal and Torres Strait Islander health organisations, rehabilitation centres, Relationships Australia, the Salvation Army, Centacare, employment agencies, sexual assault services, youth support groups, and men's and women's groups.

Services include but are not restricted to the following:

- To reduce the over representation of Indigenous offenders and victims in the criminal justice system and to support the Qld Government's responses to the recommendations in the Royal Commission into Aboriginal Deaths in Custody (RCIADIC)
- To reduce Indigenous recidivism rates in the criminal justice system.
- To support Indigenous victims and offenders at all stages of the legal process. To encourage diversionary processes (such as encouraging offenders to engage with the Indigenous Sentencing List), and develop

networks with other government agencies to ensure that issues impacting on Indigenous communities are addressed.

- To provide two important activities: the making of appropriate cultural submissions to the Magistrates Court and the identification and promotion of supporting programs that assist Magistrates in decision making.

The Service's human resources include a Coordinator, administrative support is provided by Juwarki Corporate.

ELDERS TRANSPORT SERVICE - PROGRAM SUMMARY

A transport service for Elders from the Rockhampton and Woorabinda Community to the Capricornia Correctional Centre. This service is funded by the Department of Corrective Services Queensland.

SISTERS IN MINING - PROGRAM SUMMARY

A program which trains Indigenous women to drive mining haul trucks, the traineeships in Surface Extraction are aimed at helping Indigenous women gain employment in the mining sector and helps prepare them for a career as a truck operator.

The initiative involves teaching technical competencies in a state-of-the-art simulator, and participants also receive life skills training in areas such as goal setting, negotiation, nutrition and personal finance.

The Program's human resources include a Coordinator and Mentor with administrative support provided by Juwarki Corporate.

JUWARKI KAPU-LUG - PRIVACY STATEMENT

Juwarki Kapu-Lug is committed to protecting the privacy of personal information. All information collected by Juwarki Kapu-Lug is protected by the Privacy Act 1988. Individuals have a right to privacy and confidentiality, especially when experiencing a situation which increases their vulnerability. All staff members have a responsibility to respect the privacy of individual clients and confidentiality of client information at all time.

Service users are advised that information collected may be provided to the Department of Communities, Child Safety and Disability Services, Justice and Attorney General's Department, Qld Corrective Services, Qld Department of Education and Training, Department of Prime Minister and Cabinet for the purpose of ensuring that service users are provided with a quality service.

Juwarki Kapu-Lug is obliged to immediately notify the Department of Communities, Child Safety and Disability Services, the Justice and Attorney General's Department, Qld Corrective Services, Qld Department of Education and Training, Department of Prime Minister and Cabinet of any breaches to the protection of Personal Information.

Juwarki Kapu-Lug is also obliged to notify the Department of Communities, Child Safety and Disability Services, the Justice and Attorney General's Department, Qld Corrective Services, Qld Department of Education and Training, Department of Prime Minister and Cabinet if they become aware that disclosure of Personal Information, in relation to a child/children subject to the Child Protection Act 1999 or the Juvenile Justice Act 1992, is made or may be required by law.

