



Connecting HEALTHCARE IN CQ

{COMMUNITY FORUMS}

A chance to have YOUR SAY on Health and Wellbeing in YOUR Community

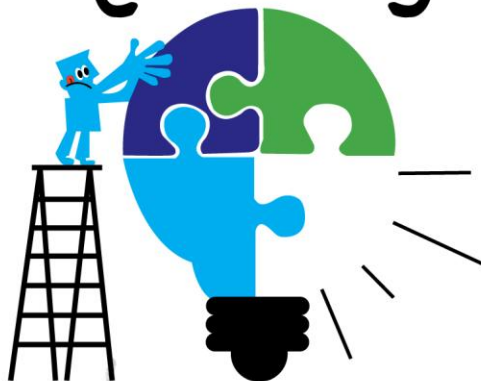
GLADSTONE FORUM

Date: Thursday 21st March 2013
Time: 5pm - 7pm
Venue: GRC - Community Advisory Service Building
Address: 142 Goondoon St, Theiss Room
Hosted By: Central Queensland Medicare Local

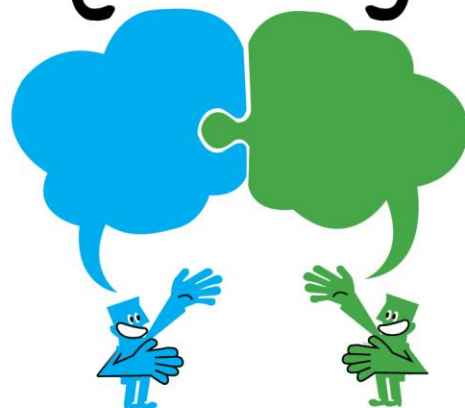
{ getting the facts }



{ identifying the gaps }



{ making the connections }



CENTRAL QUEENSLAND

Connecting health to meet local needs

Complete the survey and go into the draw to
WIN one of 5 iPad Mini's!

go to: www.connectinghealthcq.com

